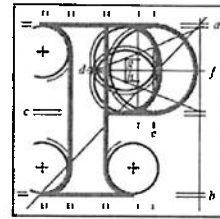


**Our Case Number:** ABP-312981-22

**Planning Authority Reference Number:** 206955



**An  
Bord  
Pleanála**

Development Applications Unit  
The Manager  
Development Applications Unit (DAU)  
Government Offices  
Newtown Road  
Co. Wexford  
Y35 AP90

**Date:** 1 April 2022

**Re:** Construction of an agricultural fertilizer facility, and additional port operational use of the jetty to facilitate cargo vessels and associated site works. A Natura Impact Statement (NIS) and Environmental Impact Statement accompanied the planning application. The proposed development comprises the provision of an establishment to which the Major Accident Directive applies.

Belvelly Port Facility, Marino (Townland), Marino Point, Cobh, Co. Cork.

Dear Sir / Madam,

I have been asked by the Board to refer to the above-mentioned appeal.

The Board is of the opinion that the proposed development, the subject of the appeal, might have significant effects in relation to nature conservation.

Having regard to article 28(1)(n) of the Planning and Development Regulations 2001 to 2018, the Board is of the opinion that it is appropriate in the interests of justice to request you to make submissions or observations to it.

In accordance with section 131 of the Planning and Development Act, 2000, (as amended), you are requested to make any submissions or observations you have in relation to the appeal in the context of the matter referred to in the above-mentioned article. The Board cannot consider submissions or observations that are outside the scope of that matter. Your submission in response to this notice must be received by the Board not later than **5.30 p.m. on 28th April, 2022.**

If no submissions or observations are received before the end of the specified period, the Board will proceed to determine the appeal without further notice to you, in accordance with section 133 of the 2000 Act, (as amended).

I enclose for your information a copy of the decision order of the planning authority on the application and a copy of the site location map. The planning application, along with other documents relating to the planning authority decision and copies of the appeal(s) made to the Board are available for inspection at

<b>Tel</b>	<b>Tel</b>	(01) 858 8100
<b>Glao Áitiúil</b>	<b>LoCall</b>	1890 275 175
<b>Facs</b>	<b>Fax</b>	(01) 872 2684
<b>Láithreán Gréasáin</b>	<b>Website</b>	<a href="http://www.pleanala.ie">www.pleanala.ie</a>
<b>Ríomhphost</b>	<b>Email</b>	<a href="mailto:bord@pleanala.ie">bord@pleanala.ie</a>

64 Sráid Maoilbhríde	64 Marlborough Street
Baile Átha Cliath 1	Dublin 1
D01 V902	D01 V902

the offices of the planning authority in accordance with section 38 of the Planning and Development Act, 2000, (as amended), and article 68 of the Planning and Development Regulations 2001.

Please quote the appeal reference number in any correspondence.

Yours faithfully,

*S. Skelly*  
\_\_\_\_\_  
pp Sorcha Skelly

Executive Officer  
Direct Line: 01-8737164

BP70A Registered Post

Teil  
Glao Áitiúil  
Facs  
Láithreán Gréasáin  
Ríomhphost

Tel  
LoCall  
Fax  
Website  
Email

(01) 858 8100  
1890 275 175  
(01) 872 2684  
[www.pleanala.ie](http://www.pleanala.ie)  
[bord@pleanala.ie](mailto:bord@pleanala.ie)

64 Sráid Maoilbhríde  
Baile Átha Cliath 1  
D01 V902

64 Marlborough Street  
Dublin 1  
D01 V902